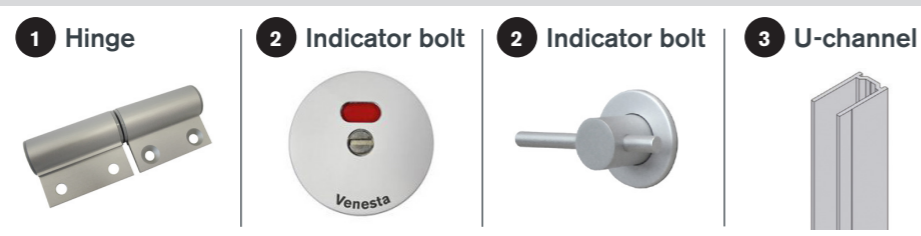
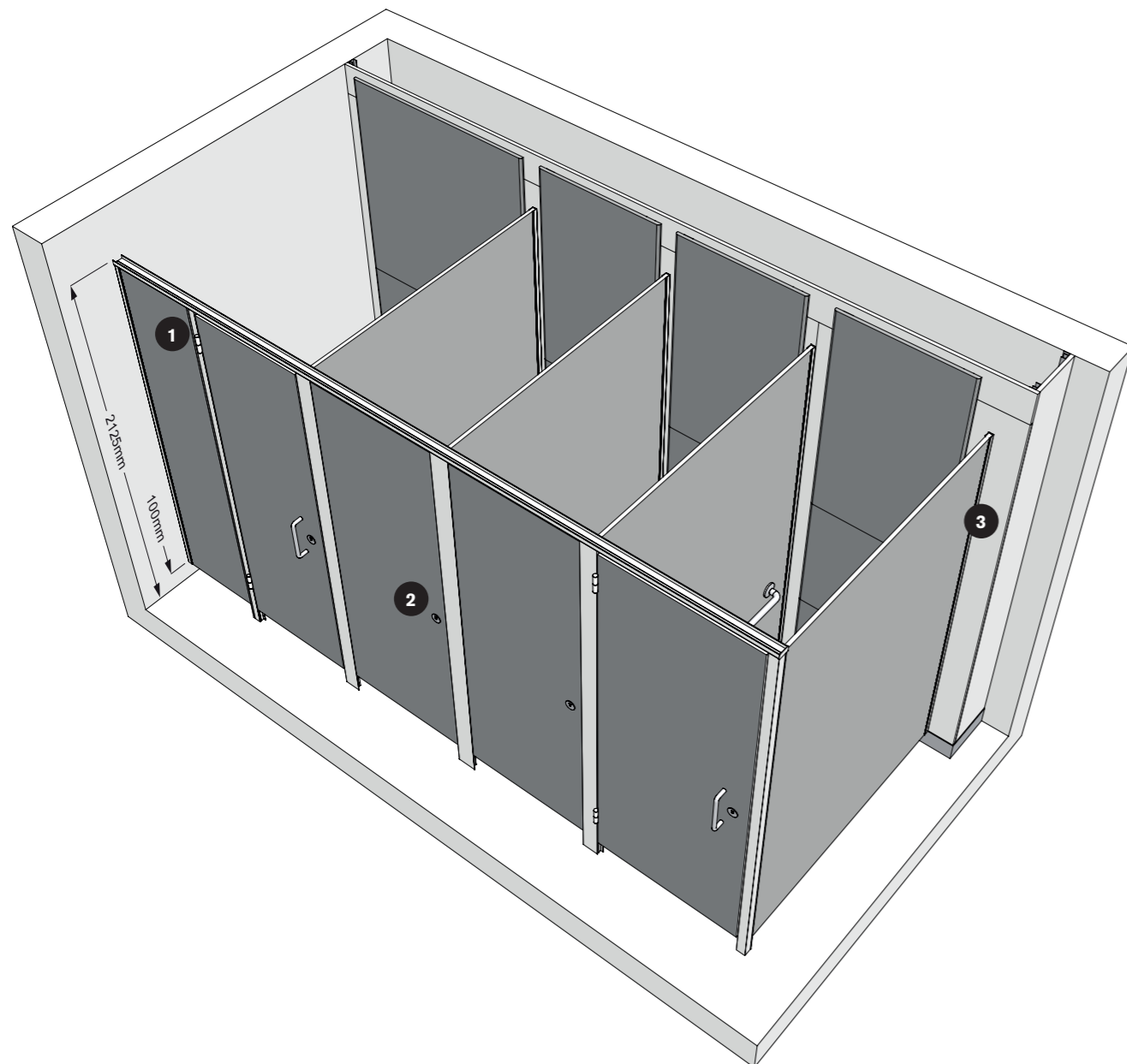


Technical Specifying Fusion



Dimensions

Fusion	
Overall height	
MFC	2125mm
HPL	2125mm
SGL	2125mm
Maximum depth	
MFC	2090mm
HPL	2060mm
SGL	1930mm
Floor clearance	100mm
Minimum ceiling clearance	150mm
Fusion Full Height	
Maximum height	
MFC	2895mm
HPL	2895mm
SGL	2895mm
Maximum depth	
MFC	2090mm
HPL	2060mm
SGL	1930mm
Floor clearance	100mm
Minimum ceiling clearance	150mm

Performance

Available in three material options, Fusion is suitable for every type of wet or dry environment, allowing you to specify the most appropriate option to meet the site requirements and your budget.

MFC

For dry environments with low risk of vandalism. Panels are manufactured from 19mm nominal thickness high performance moisture-resistant melamine faced chipboard. Edges lipped with ABS.

HPL

For more heavily used washrooms, panels are heat, scratch and impact resistant. Manufactured from moisture-resistant chipboard faced with high pressure laminate, panels are 19mm nominal thickness. Edges lipped with ABS.

SGL

Solid grade laminate is extremely resistant to impact and all surfaces are impervious to water. Panels are 13mm nominal thickness with polished black radiused edges.

Detailing

Panels and doors

Available in MFC, HPL and SGL.

Colour finish

MFC, HPL and SGL
34 colours from the standard range.

Cubicle hardware

Satin anodised aluminium.

Edge treatment

MFC and HPL
Matching ABS lipping.

SGL

Polished black radiused edge.

Headrail

Satin anodised aluminium.

Pilasters

High strength, slimline extruded satin anodised aluminium, incorporating moulded channel to secure partition.

Cubicle hardware

Indicator bolt

Satin anodised flip indicator bolt with circular face plate, emergency release facility and matching keep.

Hinge

Rise and fall satin anodised aluminium hinges with adjustable self-lubricating cams to allow the door to fall closed, open or ajar. Lift off hinge to allow emergency access.

Pedestal

No pedestal required as the pilasters extend to floor level and are fixed to floor mounting blocks.

Fixings

Partition to wall: Continuous satin anodised aluminium U-channel.

Accessories

Coat hooks and toilet roll holders available.